

T O D A Y *in*
G E O R G I A
H I S T O R Y

December 8, 1765: Eli Whitney Born
Learn More

Suggested Readings

Constance McLaughlin Green, *Eli Whitney and the Birth of American Technology* (Boston: Little, Brown, 1956).

Jeannette Mirsky and Allan Nevins, *The World of Eli Whitney* (New York: Macmillan, 1952).

“Eli Whitney in Georgia.” *New Georgia Encyclopedia*. <http://www.georgiaencyclopedia.org/nge/Article.jsp?id=h-3497&sug=y>

GeorgiaInfo: <http://georgiainfo.galileo.usg.edu/eli-whitney.htm>

Eli Whitney Museum and Workshop: <http://www.eliwhitney.org/>

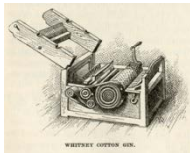
T O D A Y *in*
GEORGIA
H I S T O R Y

December, 08, 1765: Eli Whitney
Learn More

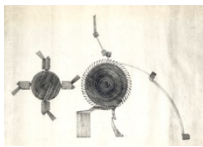
Image Credits



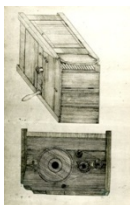
Catharine Littlefield Greene Miller
Courtesy of the Telfair Museums



Cotton Gin
History of Georgia for use in Schools, MC F286 E9 1908
Courtesy of the Georgia Historical Society

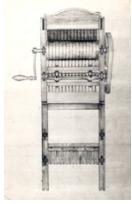


Cotton Gin diagrams
Eli Whitney letters and detail drawings, MS 866
Courtesy of the Georgia Historical Society



Cotton Gin diagrams
Eli Whitney letters and detail drawings, MS 866
Courtesy of the Georgia Historical Society

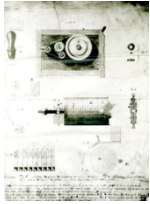
T O D A Y *in*
GEORGIA
H I S T O R Y



Cotton Gin diagrams

Eli Whitney letters and detail drawings, MS 866

Courtesy of the Georgia Historical Society



Cotton Gin diagrams

Eli Whitney letters and detail drawings, MS 866

Courtesy of the Georgia Historical Society



Cotton Gin diagrams

Eli Whitney letters and detail drawings, MS 866

Courtesy of the Georgia Historical Society



History of Sea Island cotton

Library of Congress, Prints and Photographs Division, LC-USZ62-116579



Eli Whitney

Library of Congress, Prints and Photographs Division, LC-USZC4-12270

TODAY *in*
GEORGIA
HISTORY



Picking cotton on a Georgia Plantation
Library of Congress, Prints and Photographs Division, LC-USZ62-76385



Plantation view, 1361PH-01-17-6162
Courtesy of the Georgia Historical Society